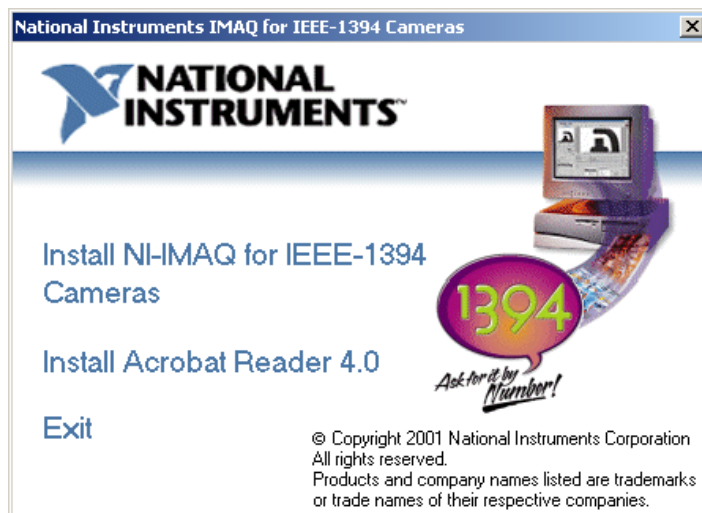


Getting Started with NI-IMAQ™ for IEEE-1394 Cameras

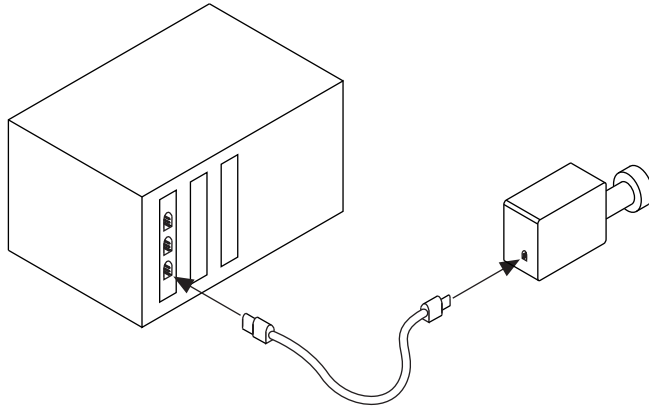
1 Install the NI-IMAQ for IEEE-1394 Cameras Software



Need more information?
See your *NI-IMAQ for IEEE-1394 Cameras User Manual*.

2

Connect Your Camera



Note *Follow the instructions in your IEEE-1394 camera documentation to install your IMAQ device.*



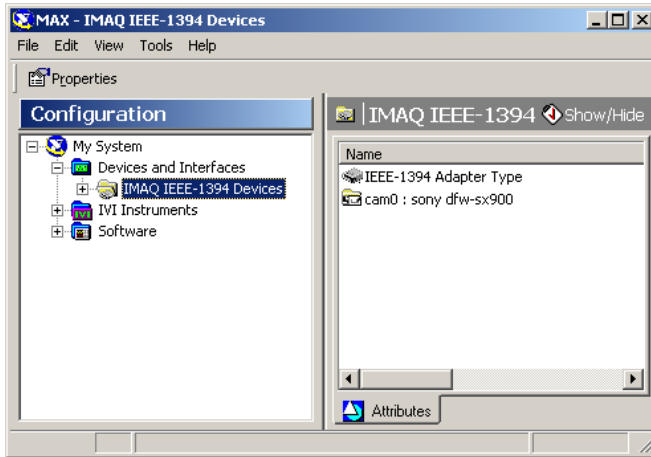
Need more information?
See your *NI-IMAQ for IEEE-1394 Cameras User Manual*.

3

Run Measurement & Automation Explorer



Double-click on the Measurement & Automation (MAX) icon on your desktop. You can use MAX to modify camera properties. Once you have saved these properties, they become your default settings for all NI-IMAQ for IEEE-1394 Cameras or IMAQ Vision applications.



Click on the plus sign next to **Devices and Interfaces** to display a list of your installed IEEE-1394 IMAQ devices.



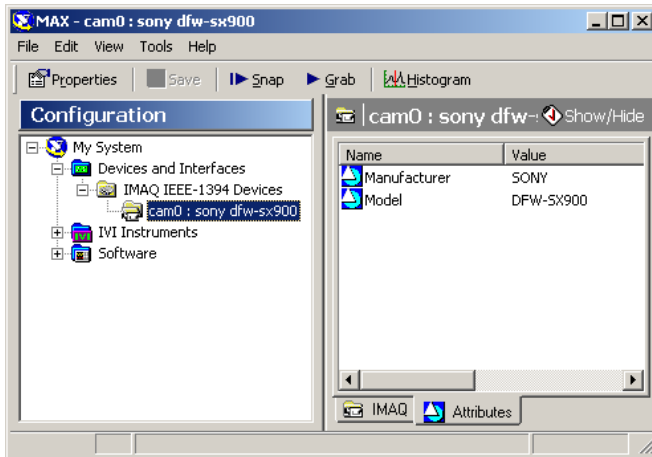
Click the **Properties** button on the toolbar to view or modify the camera file.



Need more information?

See the Measurement & Automation online help (Help»Help Topics menu item).

4 Acquire an Image



Select the **IMAQ** tab to view your images.



Select the camera and click the **Properties** button on the toolbar to view or modify the camera features.



Click the **Snap** button on the toolbar to acquire your first image. Select the **IMAQ** tab to view your image.



Click the **Grab** button on the toolbar to acquire images continuously. This allows you to focus your camera. Select the **IMAQ** tab to view your images.



Need more information?

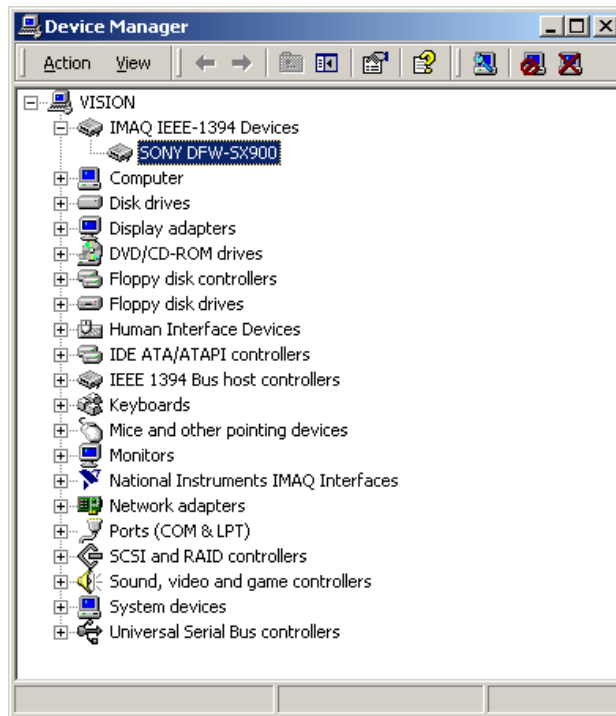
See the **Measurement & Automation** online help (**Help»Help Topics** menu item).

5 Troubleshooting

Q: Why doesn't my camera appear in MAX?

A: Your camera is either powered incorrectly, or is not associated with the NI-IMAQ for IEEE-1394 Cameras driver. Follow these steps to locate your camera in MAX:

1. Check that your camera is powered on.
2. Uninstall any drivers that were shipped with your camera.
3. Open your device manager. If you are running Windows 98/Me, right click on **My Computer**, select **Properties**, and then select the **Device Manager** tab. If you are running Windows 2000, right click on **My Computer**, select **Properties**, select the **Hardware** tab, and then click the **Device Manager** button.



Need more information?

See the Measurement & Automation online help (Help»Help Topics menu item).

4. Locate your camera under **IMAQ IEEE-1394 Devices**.

If your camera is not listed there, look under **Imaging Devices** or **Unknown Devices**. When you find your camera, click **Remove** and then **Refresh**.

5. Verify that your camera appears as a IMAQ IEEE-1394 device. If not, your system is still associating another driver with your camera, and you must repeat steps 2 through 5.

Q: Why does my system ask for a driver even though I have installed NI-IMAQ for IEEE-1394 Cameras?

A: NI-IMAQ for IEEE-1394 Cameras recognizes a predefined set of cameras using information stored in each camera's ROM. If you have a new camera or a new version of an existing camera, your system may not recognize the camera without this information.

When your operating system detects an unrecognized camera, it launches the **Found New Hardware** wizard. This wizard guides you through selecting and installing the appropriate camera driver.

1. Select **Search for a Suitable Driver**.

2. Select **Specify a location**.

3. Enter `C:\WINDOWS\INF` in the location field, where *WINDOWS* is the name and location of your operating system directory.

The wizard searches for the files you selected and completes the driver installation.



Need more information?

See the Measurement & Automation online help (Help»Help Topics menu item).

IMAQ™, National Instruments™, and NI-IMAQ™ are trademarks of National Instruments Corporation. Product and company names mentioned herein are trademarks or trade names of their respective companies.
Copyright © 2001 National Instruments Corporation. All rights reserved.



322885A-01

Mar01